

AT12 - Twin

Chain Actuator / 24V / 1A dc / 500N



AT12 - Twin Chain Actuator / 24V / 1A dc / 500N

The AT12 - Twin is a certified and compliant Chain Actuator designed to provide precise and reliable operation for environmental window automation ventilation applications. Designed with decades of experience within the façade industry the AT12 - Twin can seamlessly integrate into a BMS or be operated via independent control panels, switches and sensors.

SE Controls manufacture this high-quality 'Made in Britain' actuator with the following features:

- Seamless two way communication with Building Management Systems via Modbus protocol
- Simple 2 wire open/close 24V dc operation for non BMS applications
- Slimline design with handed end block connector (either end) for simple site cabling and connection
- Precise opening control with true status and position feedback (via Modbus)
- Programmable**
- Programmable seal relief to optimise window performance
- Inbuilt cycle counting to provide operational frequency to protect warranty
- 15,000 operational cycles or 12 months warranty*
- 425mm opening stroke for greater free area performance
- 2 x 2000N closed clamping force points of contact for increased security
- Operation via analogue 0-10V input and permanent 24V dc (Primary end)

*Commercial terms for each project will supersede this warranty information.

**Average opening & closing speed

Accreditations

Meets the required maximum indoor ambient noise level under BS EN ISO 16032.2004 for BB93.2015

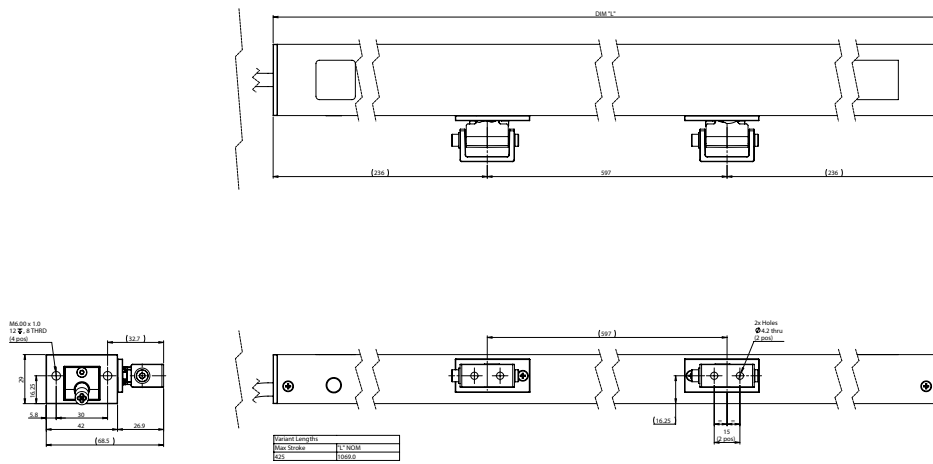


Applications



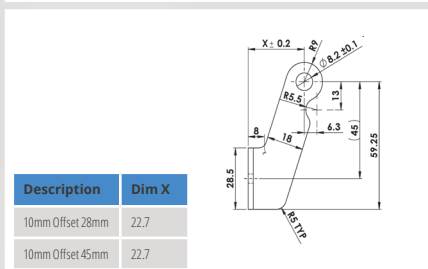
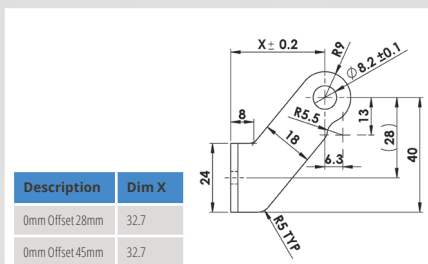
Not suitable for Smoke Ventilation

Technical Drawing



The AutoCAD drawing for this product can be found at www.secontrols.com

Standard Bracket Detail



Bracket Product Codes*

Part No. and Description	Offset	Height
AKS21000001 Pivot Bracket Kit	0mm	28mm
AKS21000002 Pivot Bracket Kit	0mm	45mm
AKS21100001 Pivot Bracket Kit	10mm	28mm
AKS21100002 Pivot Bracket Kit	10mm	45mm

*Other brackets are available. Please contact SE Controls

Controllers

Controller	No. Actuators*
3 AMP Transformer	1
NVLogiQ PSU	4
SHEVTEC Controller	8
30 AMP PSU	30

*Recommended maximum no. of Actuators

NB: 24V actuators require control from a compatible low voltage unit such as an OS2 SHEVTEC controller or NVLogiQ® PSU and permanent power should not be applied.

Product Code

AT12 - Twin Chain Actuator 425mm RAL 7043 Matt 4C	A12T1A90025
--	-------------

Technical Data

Actuator Designation	AT12 - Twin
Actuator Type	24V Twin Chain Actuator
Voltage (all +/-5%)	24V
Current Draw (Amp)	1A Max dc at 500N
Stroke	425mm (Configurable)
Operating Speed (Average)	Up to 5mm/s
Ambient Operating Temp	-5°C to +60°C
Open Force	500N Max (2 x 250N)
Close Force	500N Max (2 x 250N)
Soft Close	Yes
Switching	Electronic
Standard Finish	Power-coated Anthracite Grey (RAL 7016)
Seal Relief	Programmable up to 20mm
Clamping Force	4000N
Colour Option	Other RAL colour options available on request
Flex Length	3m. Other lengths available on request
Flex Type	4 Core / 1mm ² Silicone
Flex Colour	Anthracite Grey (RAL 7043)*
Product Warranty	15,000 operational cycles or 12 months**
Duty Cycle	40% (max 3 minute continuous run time)
IP Rating	IP30
Bracket Options	Pivot
Synchronisation	1x AT12 - Twin & 2x AT31 - MPL
Application	Environmental Ventilation

*This information is provided as guidance as raw materials and manufacturing processes differ therefore we cannot guarantee a precise match with the actuator body colour.
**Commercial terms for each project will supersede this warranty information.

Force Chart

